

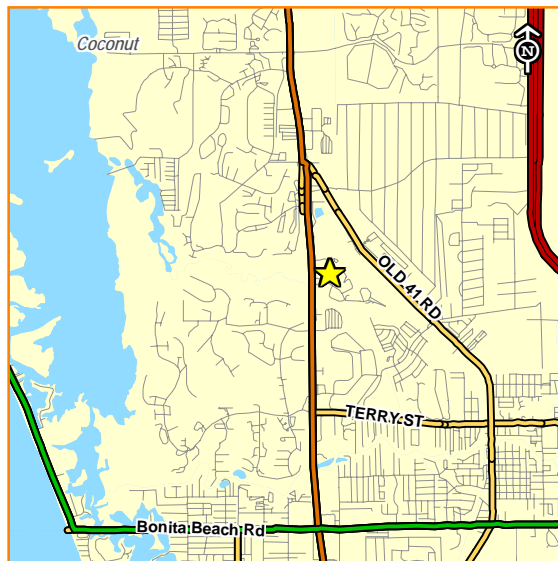
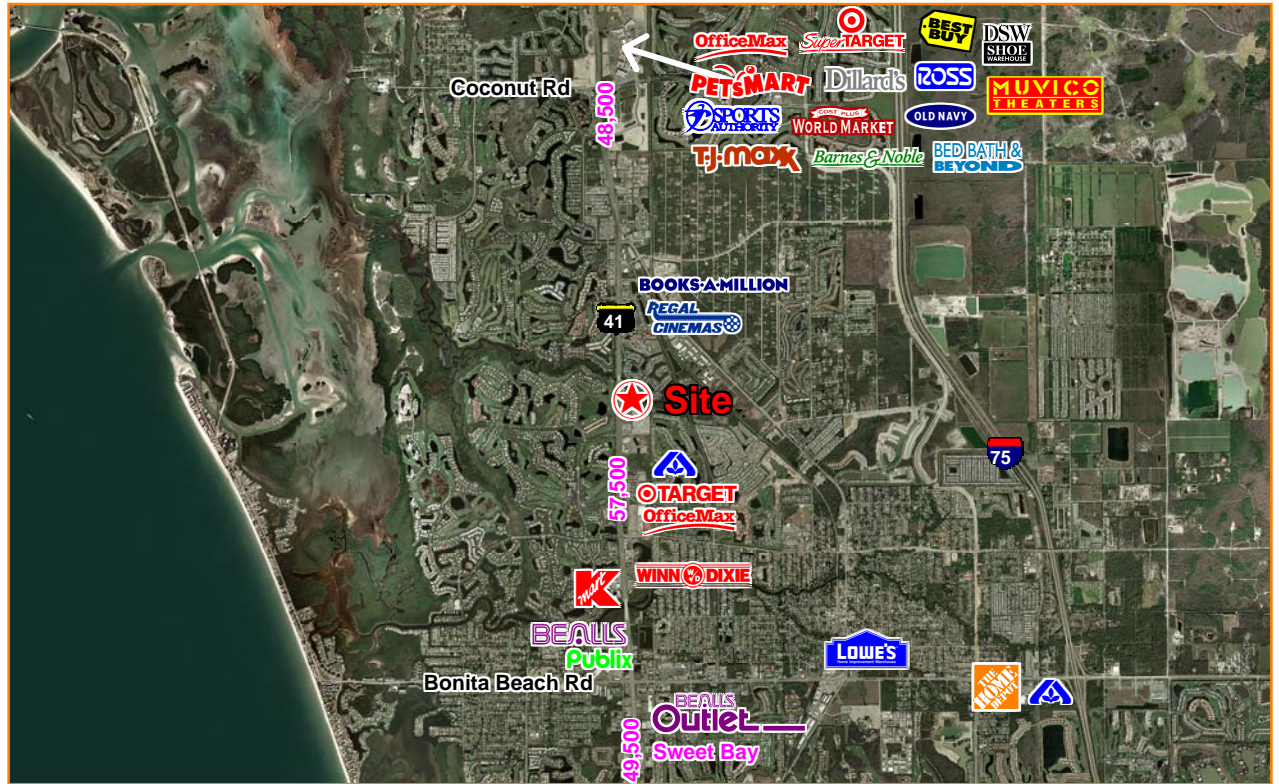
Bonita Commons

25987 South Tamiami Trail

New Retail Development



Bonita Springs, FL - Lee County



PROPERTY HIGHLIGHTS

- +/-61,000 square feet of retail space
- Retail space from 1,300 square feet to 12,060 square feet, 2 outparcels
- Growing affluent market
- Great visibility fronting US 41 (Tamiami Trail)
- New Development to be completed Spring 2007, immediate availability
- Full access via frontage road
- Traffic Counts: 48,500 AADT** (north) on US 41 57,500 AADT** (south)

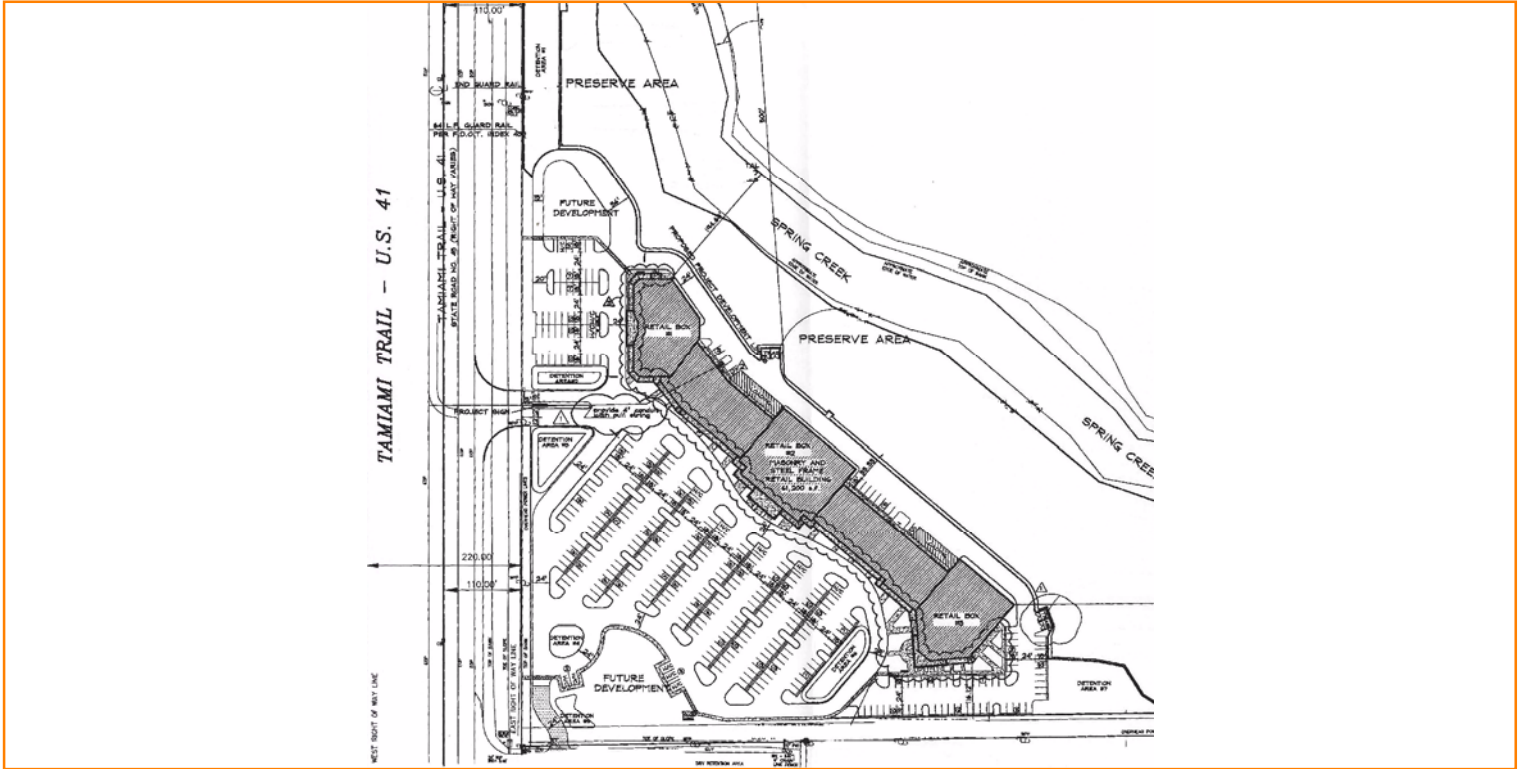
For More Information Call:

David Ward
813.850.8707
DavidW@theshoppingcentergroup.com

FOR LEASE



Bonita Commons



DEMOGRAPHICS*	3-Miles	5-Miles	7-Miles
Population	55,549	90,788	149,680
Avg. HH Income	\$89,024	\$90,769	\$89,602
Daytime Population	16,025	26,026	39,440

For More Information Call:

David Ward
813.850.8707

DavidW@theshoppingcentergroup.com



*Applied Geographic Solutions, 2006 Estimates, USPS Postal Counts.
 **FDOT 2005 Traffic County Bonita Commons.rgp Rev. 3/9/2007