

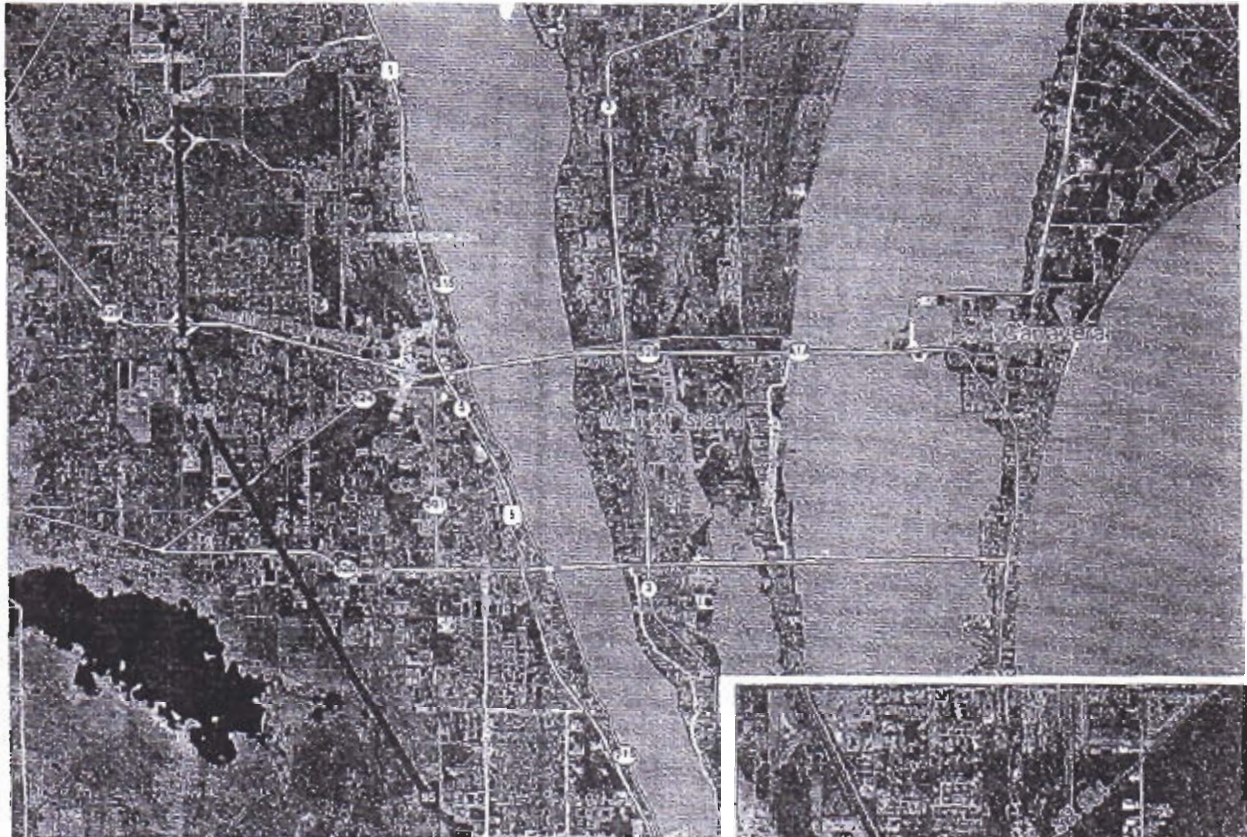


Brevard Crossings DRI

Cocoa, FL



Property Overview



Parcels For Sale/Retail for Lease

- » Multi Use Project - Retail, Office, Industrial, Multi-Family, Hotel
- » 197 Acres
- » Located in Cocoa, FL along Interstate 95 and State Route 524
- » Strong housing growth
- » Only 12 miles from Cape Canaveral, and 2.76 miles from 528 Expressway
- » Population within 10 miles is 144,455
- » Median household income within 10 miles is \$48,260
- » 84,000 AADT on Interstate 95 by site; 15,000 AADT on State Route 524



