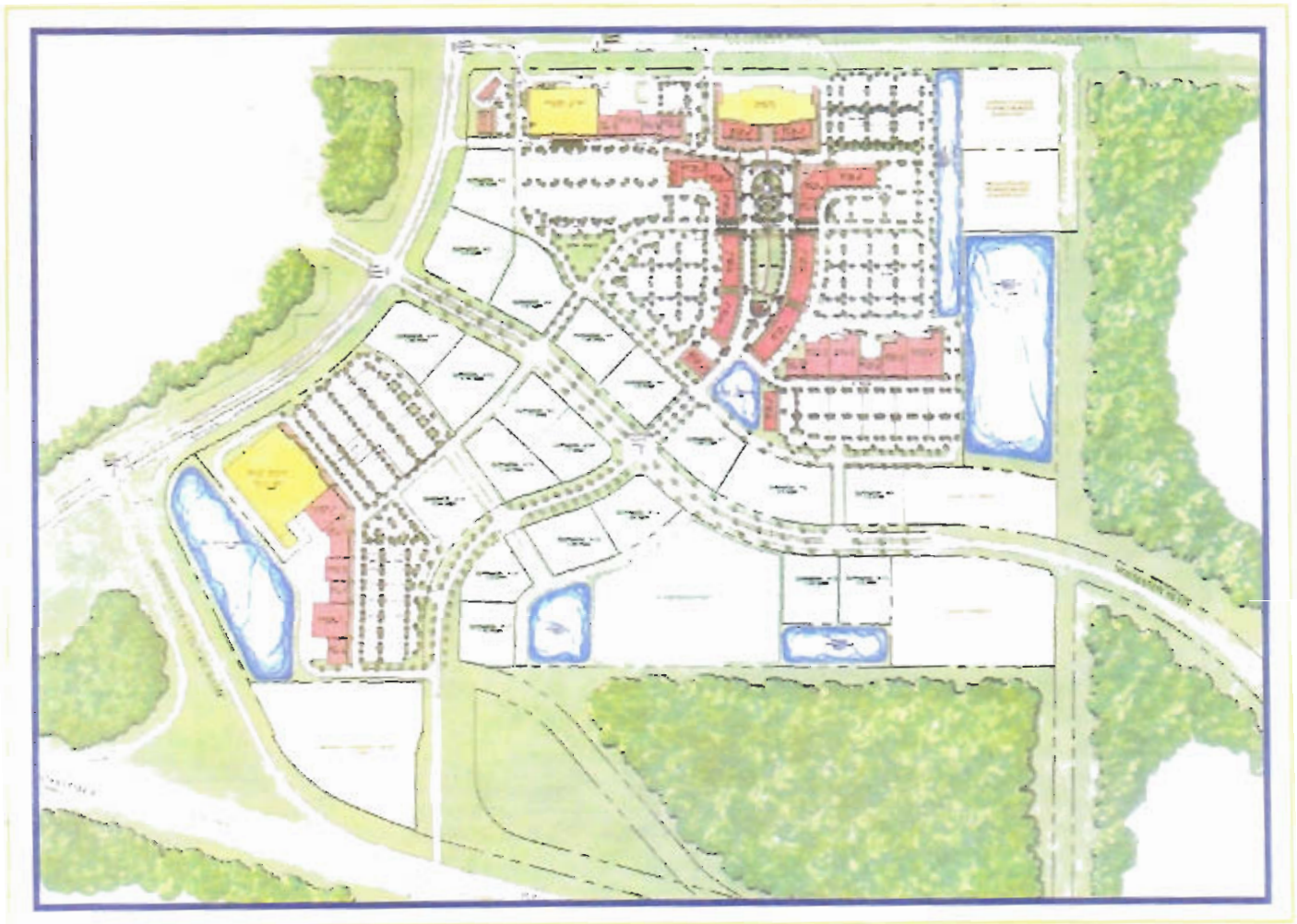
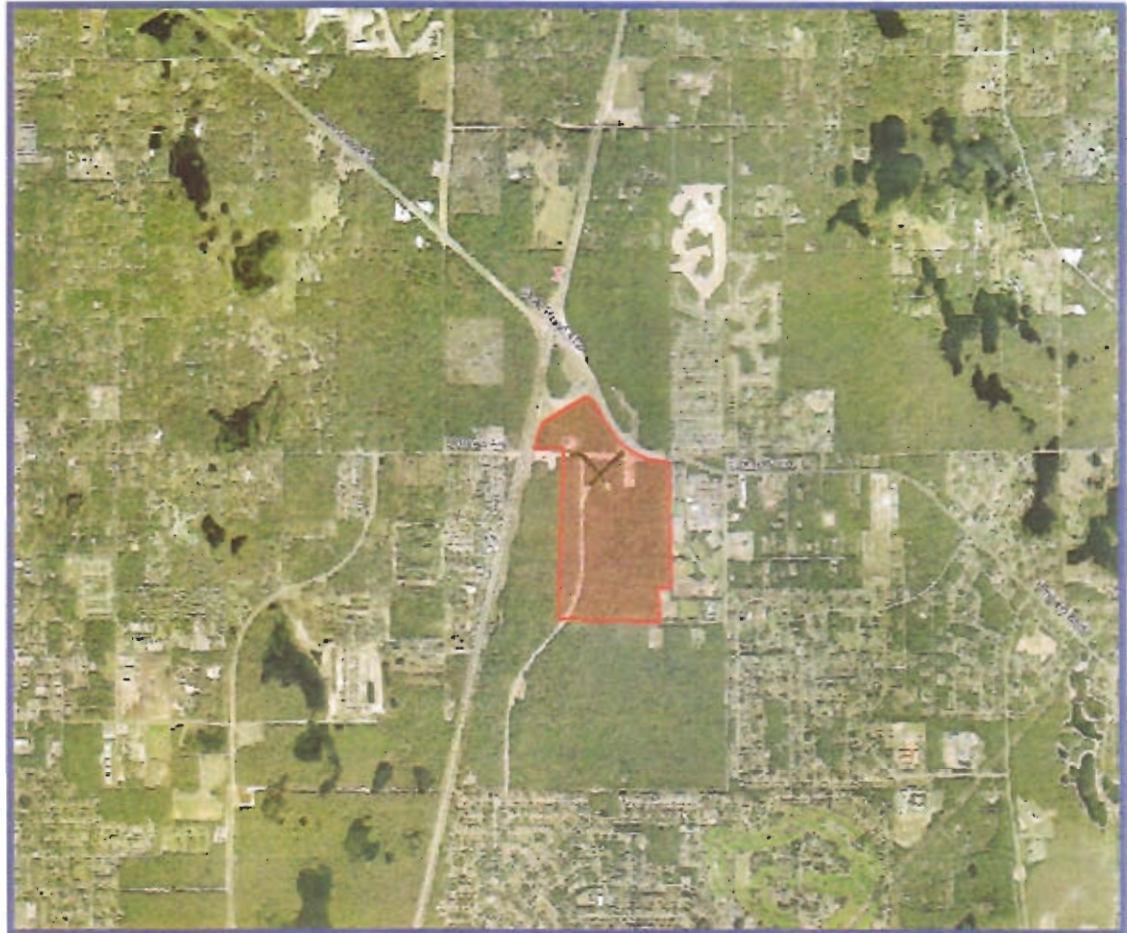


DELTONA VILLAGE



SEC I-4 And Grave Rd at State Rd 472
Deltona, FL



Deltona Village is an 80-acre retail development that will eventually encompass approximately 500,000 square feet. Phase I of the project will feature about 200,000 square feet of retail, featuring a grocery anchor, state-of-the-art 16-screen stadium-seating theatre operated by EPIC Theatres, numerous specialty restaurants, and retail shops.

Deltona Village currently has 154,167 people living within 7 miles (an area generally representative of the trade area served by the planned state-of-the-art cinema complex). The population of the area within 7 miles has grown 21% since 2000. By 2011, the population of this area is projected to be approximately 181,000.