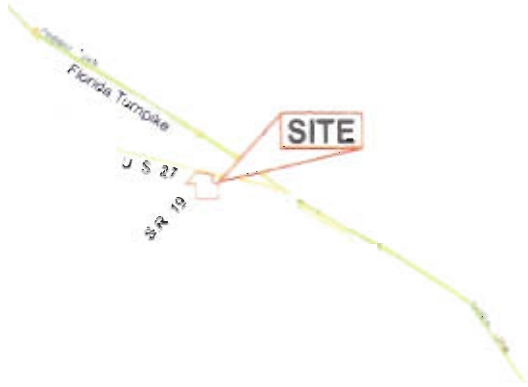


GROVELAND, FL

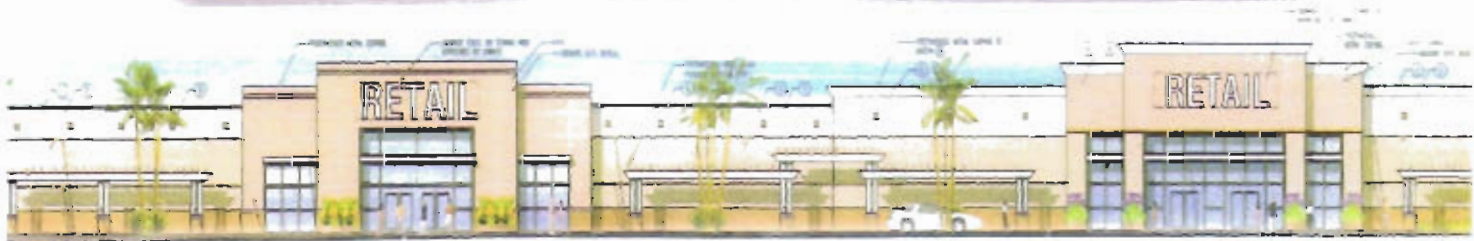
NEW DEVELOPMENT

THIS NEW DEVELOPMENT IS LOCATED IN CENTRAL FLORIDA IN THE RAPIDLY GROWING AREA NORTHWEST OF ORLANDO, FL. THE CENTER WILL BE LOCATED AT THE SE CORNER OF US 27 AND SR 19. THE SHOPPING CENTER WILL CONSIST OF APPROXIMATELY 550,000 SF WITH OUTLOTS AVAILABLE.



TRADE AREA (10 MILE RADIUS)

POPULATION	85,777
HOUSEHOLDS	33,102
AVERAGE HOUSEHOLD INCOME	\$64,017



TENANT LISTING

A - MAJOR RETAIL	110,000 SF
B - RETAIL SHOPS	8,000 SF
C - MAJOR RETAIL	88,000 SF
D - RETAIL	33,862 SF
E - RETAIL	21,895 SF
F - RETAIL SHOPS	17,200 SF
G - RETAIL	31,000 SF
H - RETAIL	26,000 SF
I - MAJOR RETAIL	207,000 SF
Total	542,957 SF

