

READY TO BUILD

POWERSCOURT RETAIL CENTRE
 13501 - 13521 DANIELS PARKWAY
 FORT MYERS, FL



PROPERTY INFORMATION

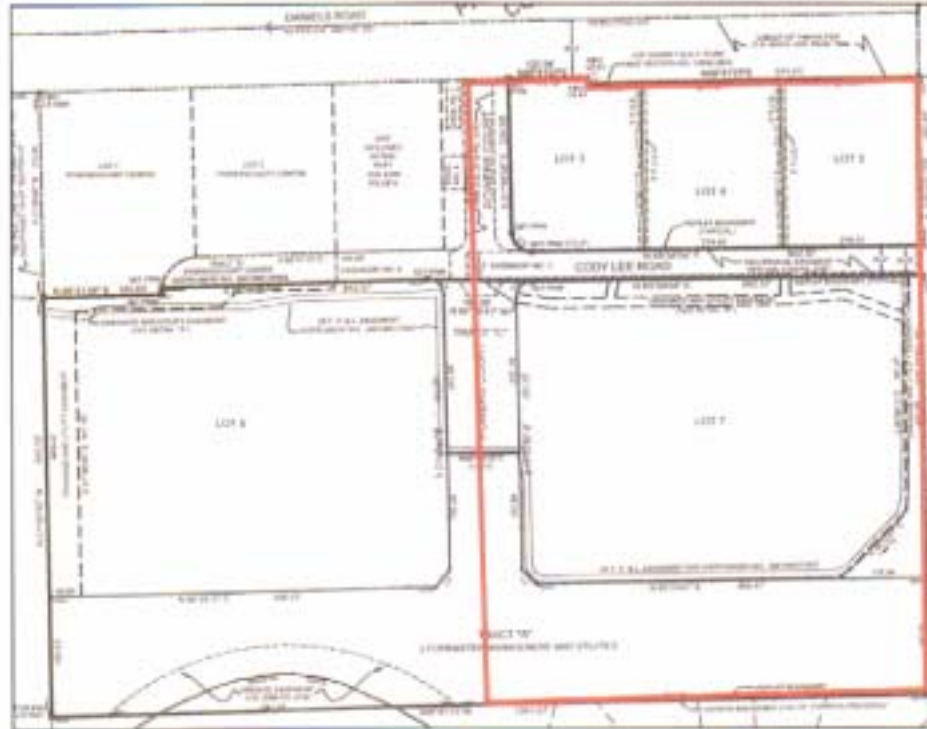
- PRICE: \$14.00 Per S.F. (\$9,147,600)
- LOT SIZE: 15 +/- ACRES
- DO IN PLACE FOR 100,000 S.F. OF RETAIL
- DESIRABLE FRONTAGE ON DANIELS
- INFRASTRUCTURE IN PLACE -
(Roads, Retention, & Utilities)
- JUST WEST OF I-75, FIDDLESTICKS BLVD.
& PUBLIX

DEMOGRAPHICS

	1 MILE	3 MILE	5 MILE
POPULATION	4,302	15,717	53,120
MEDIAN HH INCOME	\$67,079	\$68,459	\$54,331
HOUSEHOLDS	2,602	7,021	23,278

13501 - 13521 DANIELS PARKWAY
FORT MYERS, FL 33912

POWERSCOURT CENTRE II



AREA TABLE

LOCATION	SQUARE FEET
LOT 3	53,568.2
LOT 4	55,418.5
LOT 5	55,721.4
LOT 7	293,116.6