

**First-class commercial
development seeks
exciting businesses who
want to expand!**



August 8, 2007

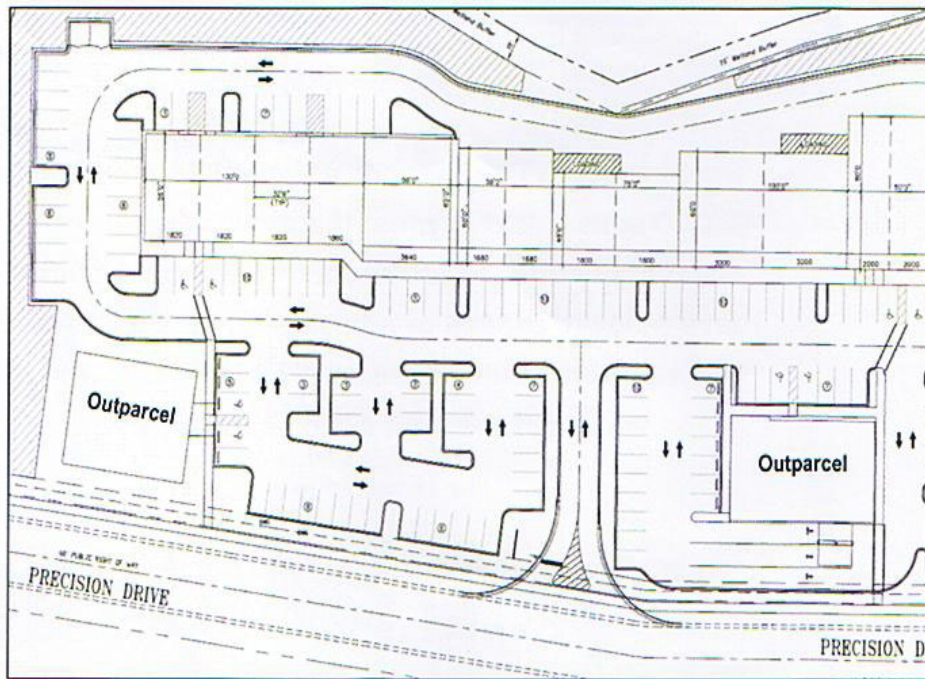
Opening soon, The Shoppes at Laurel Square boasts 42,000 square feet to meet the growing needs of east Sarasota County. Whether you are a small business that's ready to expand or a business ready to meet the new customers living East of I-75 off Laurel Road, we've got the right sized space for you.

Shoppes at Laurel Square

Area Overview



Shopping Center Site Plan

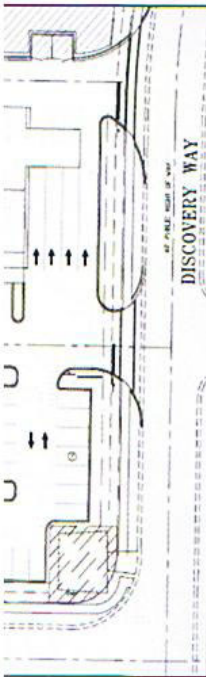




Demographics

	<u>5 Miles</u>	<u>7 Miles</u>	<u>10 Miles</u>
Population (2002)	49,031	74,878	109,676
Households (2002)	24,791	36,817	53,496
Avg. HH Income	\$61,617	\$62,921	\$65,473
Med. Disposable Inc.	\$33,159	\$33,913	\$35,200
Median Age	59.93	57.44	56.65
Avg. HH Size	2.0	2.0	2.0

Facts and Figures



- Approximately 25,000 existing or planned residential dwellings are located within a 2.5 mile radius.
- Strategically located at I-75 Exit 195 and Laurel Road, between Venice and Nokomis in rapidly growing south Sarasota County. I-75 is the region's major north/south artery and Laurel Road is a major east-west artery connecting the City of Venice with the east county area.
- The site is adjacent to two business / industrial parks with 80+ businesses and nearly 3,000 employees, including PGT Industries, Sarasota County's largest manufacturing employer.
- Located one-half mile from the planned Sarasota Memorial Healthcare campus.
- Located one-half mile from a planned Super Wal-Mart.

Traffic Counts

Laurel Road and Knights Trail 32,500

Interstate 75 North of Laurel Road 70,000

Location

Located near the intersection
of Interstate 75 and Laurel
Road, Exit 195.

