

# Super Target Outparcel

NWC Bloomingdale Avenue & Gornto Lake Road  
Riverview, FL 33569

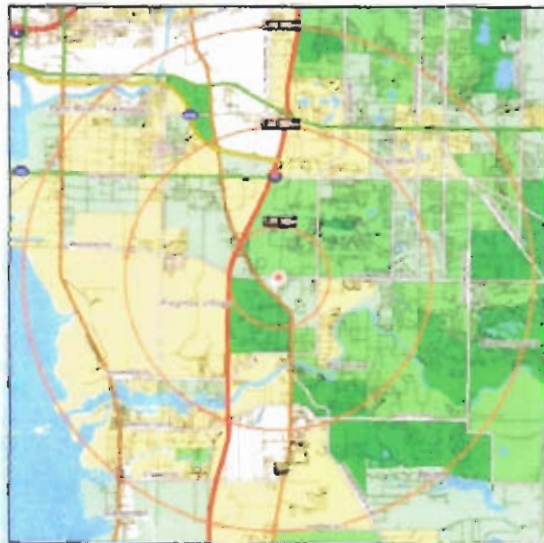


## Property Highlights:

- Anchored by Super Target, opening October 2007
- Parcel Size: 1.22 acres
- GLA: 7800 Square Feet
- NWC of signalized intersection of Bloomingdale Ave & Gornto Lake Rd with full access median cuts on each road

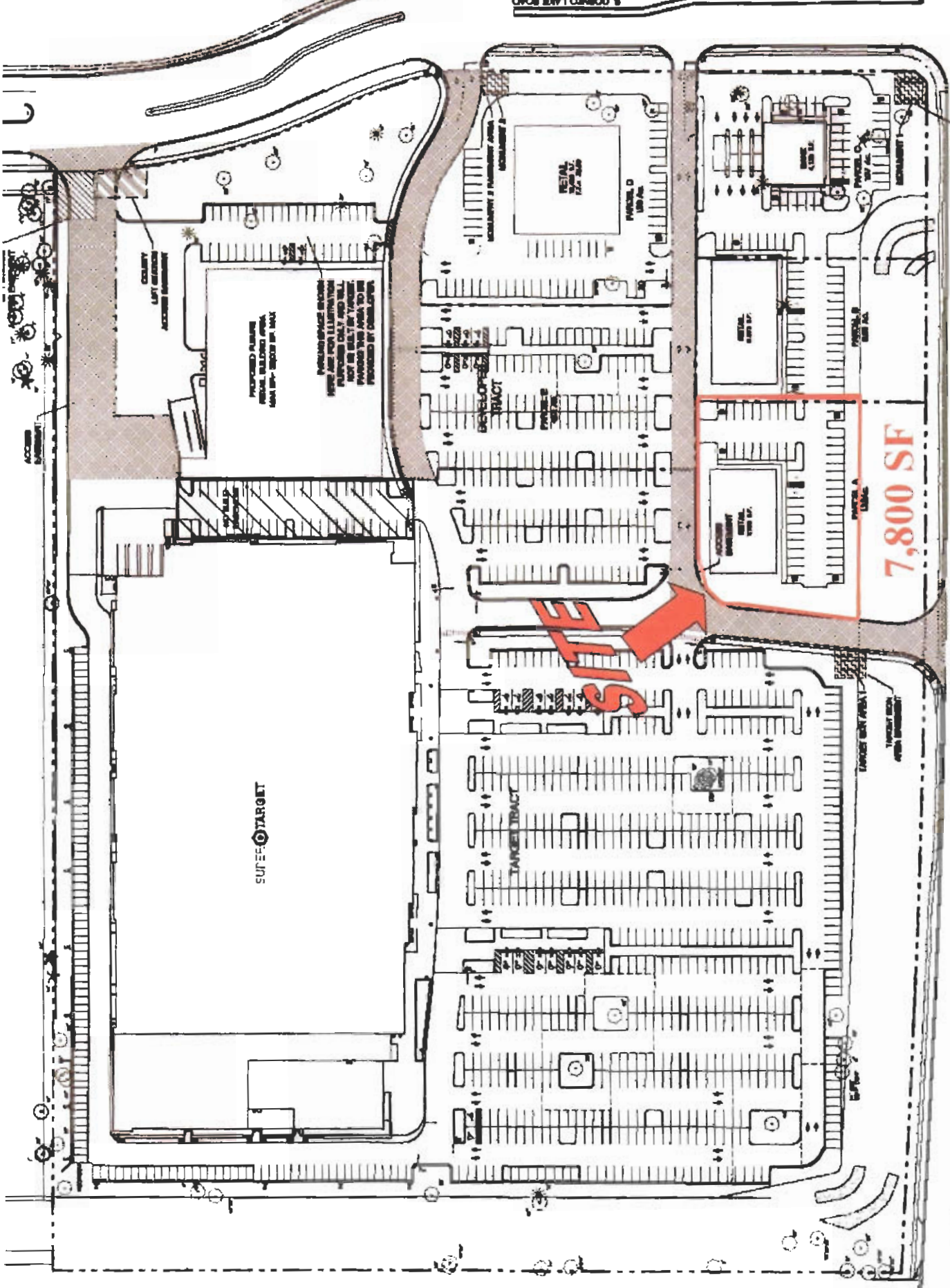
## Market Highlights:

- **Traffic Counts:**  
Bloomingdale Ave: 42,200 VPD (2005)  
Gornto Lake Rd: 9,390 VPD (2005)
- Highly desirable market with several national retailers in close proximity to the site .
- In the past six years, the population within one mile of the site has grown 60% and is projected to increase an additional 30% by 2011.
- Proximity to I-75 & US 301 make the site easily accessible to the surrounding communities.



Demographics	1-Mile	3-Mile	5-Mile
Population (as of 02/07)	8,439	76,631	172,845
Average HH Income	\$63,273	\$60,838	\$60,892
Daytime Population	1,779	17,146	56,438

1. ASPHALT  
 2. CONCRETE  
 3. GRAVEL  
 4. SAND  
 5. SOIL  
 6. PLANTING  
 7. FENCE  
 8. SIGNAGE  
 9. LIGHTING  
 10. UTILITIES  
 11. RETAINING WALL  
 12. CURB  
 13. DRIVEWAY  
 14. SIDEWALK  
 15. BIKEWAY  
 16. BIKEWAY MARKING  
 17. BIKEWAY SIGNAGE  
 18. BIKEWAY LIGHTING  
 19. BIKEWAY FENCE  
 20. BIKEWAY PLANTING



BLOOMINGTON AVENUE

BLOOMINGTON AVENUE