

Westside Corners

West 192 & County Road 545 (Avalon Road)

Kissimmee, FL



Specific Location:

SW Corner US 192 and CR 545

Space Available:

1,400 sf+ units / End Cap w/ Drive Thru

Dimensions:

20 x 70 (Inline) & 70 x 100 (End Cap)

Potential Uses:

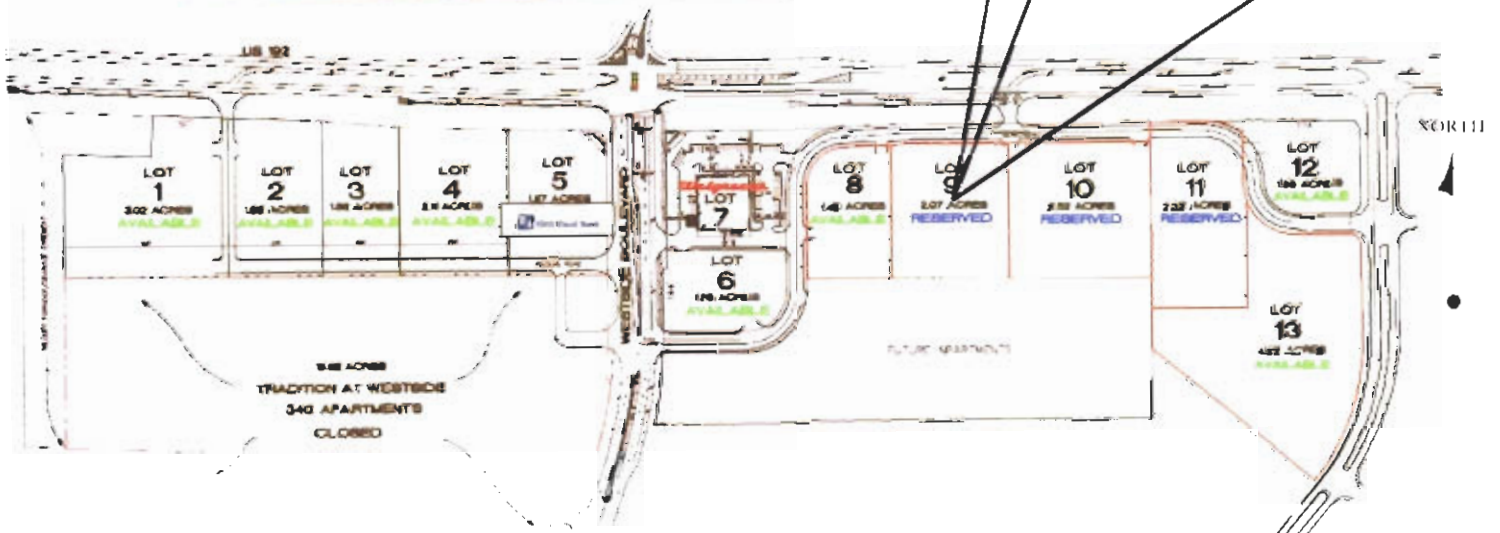
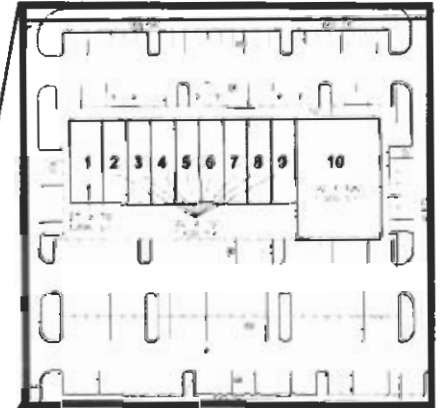
Restaurant, Retail, Fast Food, Office

Building Size:

20,100 sq ft

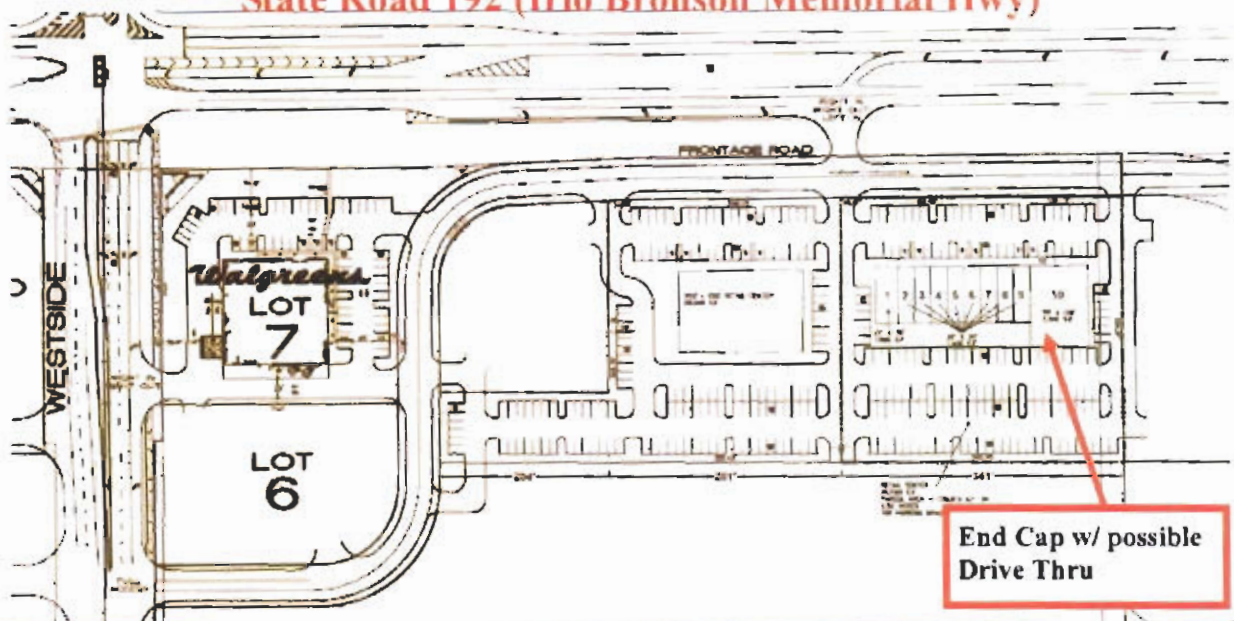
Parking Ratio:

8 Parking Spaces per 1,000 square feet



Site Plan for West Side Corners

State Road 192 (Irlo Bronson Memorial Hwy)



- High Traffic Retail Corridor
- Just West of Walt Disney World
- East of US Highway 27
- Located in the Heart of "Four Corners" Market.
- Vanilla Box Space Available
- Close Proximity to Publix, Wal-Mart Supercenter and Super Target.